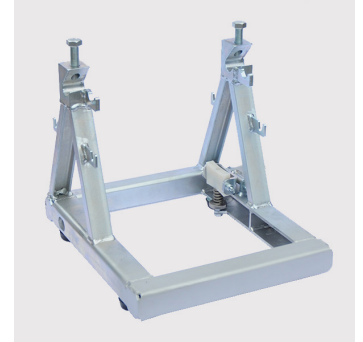


Technology for cable laying and overhead power lines

- Energy cable laying up to 680 kV
- Fibre optic, mini and micro cables
- Cable winding and length measuring
- Overhead line construction up to 110 kV
- Seminars and product instructions



Accessories to pilot rope winches



Steel rope drum alone, divisible for coiling cords, ropes or cable rings, suitable to pilot rope winches SBS 510 and SES 410. Dimension D 410/100x210 mm, for rope up to 1100 m D 4 mm, or 750 m D 5 mm. For coiling rings there will be mounted 3 segments into the drum. With this mounted steel segments the capacity will be reduced to app. 900 m D 4 or 500 m D 5 mm.

- Using some of these loose drums it is possible to blow-in pilot ropes in multi manholes and conduits.
- With the drums it is possible to blow ropes without the winch.
- The drum support is equipped with a foot brake to control the pay-out of the rope.
- With built-in steel segments stronger pulls than 1 kN are not possible.
- The steel segments must only be used for coiling cords or small cables.

Code	Type	Accessory	Detail	kg
232320	SWT 510	Drum alone	D 410x100x210	41,00
232322	TRS 208	Segment	3 needed	1,10
232340	TWG 510	Drum support	with foot brake	11,00