



**IEC 61243-1**  
Edition 2  
October 2003



## DESCRIPTION

IEC electronic voltage detector "Ultra compact series" for indoor and outdoor uses.  
Ultimate "head capacitive technology" of voltage detector.  
Universal application 50 / 60 Hz and wide band of voltage from 5 to 30 kV.  
Type S (Substation) with electrode extension. The electrode extension is designed to ensure no inside failure.  
Equipped with its insulating stick : Assembly by screwing

## OPERATING CONDITIONS

### **Voltage presence is indicated by :**

- Red flashing LED (very bright, visible at more than 20 m in direct lighting).
- Powerful rated audible signal > 67 dB (A) / 1.5 m.

### **Operating check :**

- Press the Test pushbutton, correct operation is indicated by red LED flashing on and sound signal.
- After releasing the Test button, a timed green LED lights on.  
It indicates the good working order of the detector.

### CHARACTERISTICS

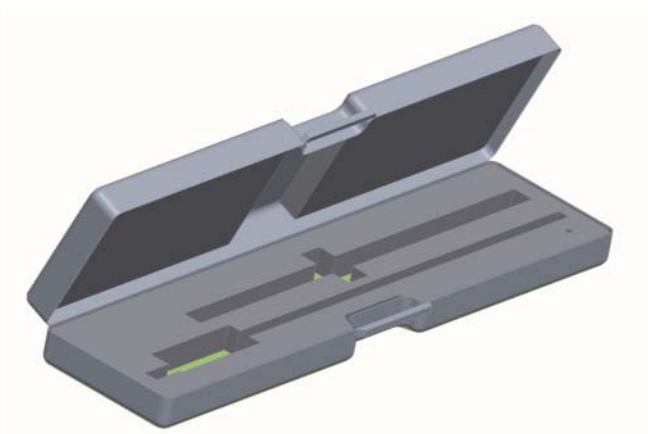
- Voltage range : see table 1
- Rated voltage ( $U_r$ ): see table 1
- Temperature conditions: class N (-25 to 55°C)
- Type S (with electrode extension)
- Electrode extension diameter : 14 mm
- Power supply: 1 standard 9 V battery 6LR61
- Network frequencies : 50 and 60 Hz
- Dimensions of the voltage detector: see table 1.
- Weight of the detector: see table 1.
- Contact electrodes fitted by screwing and easily interchangeable.
- Packaging: supplied in a carrying bag with zip (930 mm x 200 mm) and transparent side pocket
- In compliance with the standard IECI 61243-1 Ed 2 (2003).
- CE marking complies with EMC immunity regulations.

**Table 1 : References**

Reference	Voltage range	$U_r$	Dimensions	Weight
CC-965-10/30	10 to 30 kV	30 kV	Length: 1,55 m Diameter: 59 mm	0,85 kg
CC-965-5/15	5 to 15 kV	15 kV	Length: 1,45 m Diameter: 59 mm	0,82 kg

### Accessories :

Plastic carrying case : M78723



Electrode: C92-163

